

Violin II

Frank Wilhoit

Quartet No. 2, Op. 24

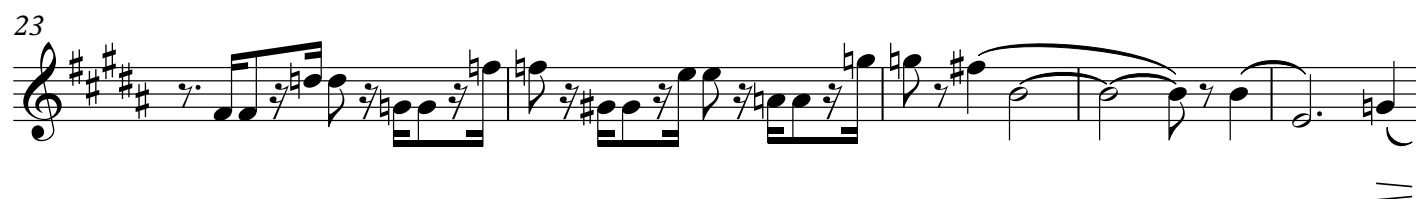
Violin II

Quartet No. 2 in B major

for 2 Violins, Viola, and Violoncello

Frank Wilhoit, Op. 24

Allegro non troppo ♩ = 116



42

mf *p*

47

E

f

51

ff *fff*

55

F

ff *f* *p*

59

G

mf *mp*

64

mp *p*

71

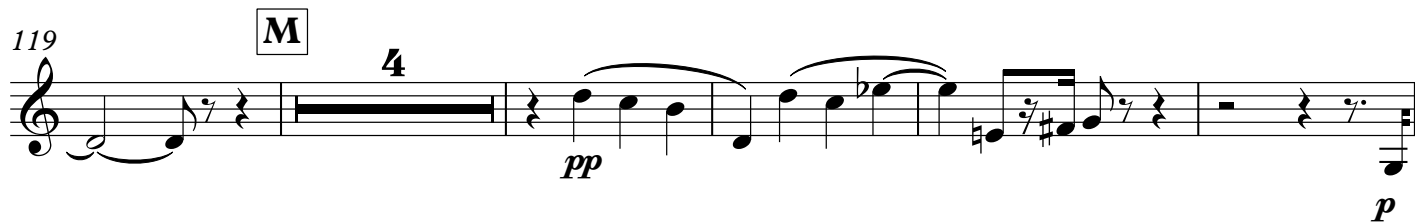
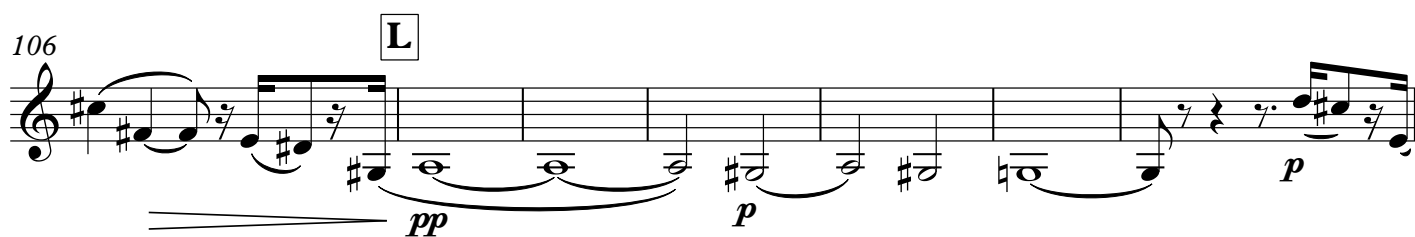
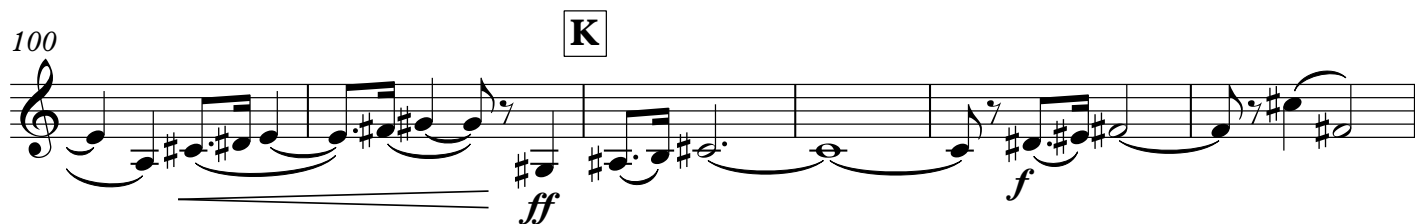
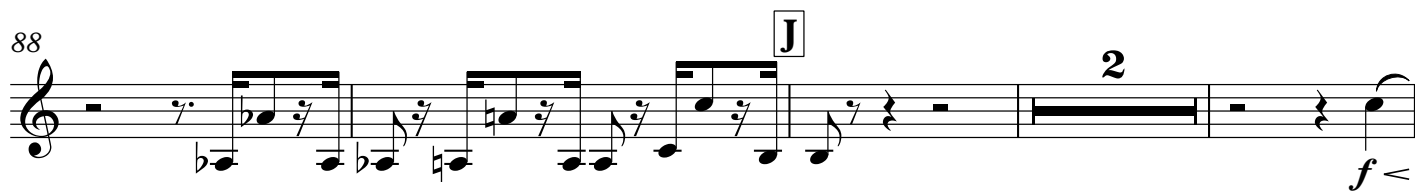
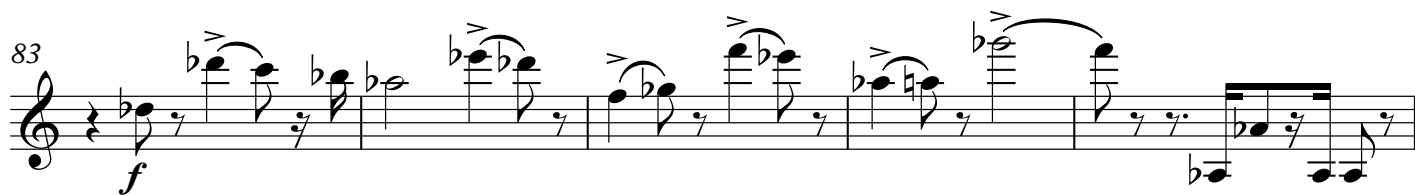
H

pp

76

I

mf *mp*



128 **N**

(2) (3) (4)

cresc. *mp* *cresc.* *f*

132 (5) (6) **O** (7) (8)

cresc. *f*

136 (9) (10)

ff

141 **P**

mf *f* *mp*

147

p *f* *ff*

151 *pizz.* **Q** **4**

158 *arco*

163

mp *mf* *f*

This musical staff contains measures 158 through 163. It begins with a whole rest, followed by a half note G4, a half note A4, and a half note B4. A crescendo hairpin leads from *mp* to *mf* over measures 159 and 160. A decrescendo hairpin leads from *mf* to *f* over measures 161 and 162. The staff ends with a half note G4 and a half note F#4.

164 **R**

168

mp *f* *f*

This musical staff contains measures 164 through 168. It begins with a half note G4, followed by a half note A4, a half note B4, and a half note C5. A crescendo hairpin leads from *mp* to *f* over measures 165 and 166. A decrescendo hairpin leads from *f* to *f* over measures 167 and 168. The staff ends with a half note G4 and a half note F#4.

169 **S**

172

This musical staff contains measures 169 through 172. It begins with a half note G4, followed by a half note A4, a half note B4, and a half note C5. A crescendo hairpin leads from *mp* to *f* over measures 170 and 171. A decrescendo hairpin leads from *f* to *f* over measures 172 and 173. The staff ends with a half note G4 and a half note F#4.

173

177

ff

This musical staff contains measures 173 through 177. It begins with a half note G4, followed by a half note A4, a half note B4, and a half note C5. A crescendo hairpin leads from *mp* to *ff* over measures 174 and 175. A decrescendo hairpin leads from *ff* to *f* over measures 176 and 177. The staff ends with a half note G4 and a half note F#4.

178 **T**

184

p

This musical staff contains measures 178 through 184. It begins with a half note G4, followed by a half note A4, a half note B4, and a half note C5. A crescendo hairpin leads from *mp* to *p* over measures 179 and 180. A decrescendo hairpin leads from *p* to *f* over measures 181 and 182. The staff ends with a half note G4 and a half note F#4.

185 **U**

190

mp

This musical staff contains measures 185 through 190. It begins with a half note G4, followed by a half note A4, a half note B4, and a half note C5. A crescendo hairpin leads from *mp* to *f* over measures 186 and 187. A decrescendo hairpin leads from *f* to *mp* over measures 188 and 189. The staff ends with a half note G4 and a half note F#4.

191

195

pp *mp* *p*

This musical staff contains measures 191 through 195. It begins with a half note G4, followed by a half note A4, a half note B4, and a half note C5. A crescendo hairpin leads from *pp* to *mp* over measures 192 and 193. A decrescendo hairpin leads from *mp* to *p* over measures 194 and 195. The staff ends with a half note G4 and a half note F#4.

197 V

6

mp *p*

This musical staff (measures 197-207) is in treble clef with a key signature of four sharps (F#, C#, G#, D#). It begins with a whole note chord, followed by a half note, and then a whole rest. A bracket labeled '6' spans measures 199-201. The staff continues with eighth notes, some with accents, and ends with a half note. Dynamic markings include *mp* and *p*.

208 W

mp *p* *pp*

This musical staff (measures 208-214) continues in the same key signature. It features a series of eighth and sixteenth notes, some with slurs and accents. Dynamic markings include *mp*, *p*, and *pp*.

215

p *mp* *mf*

This musical staff (measures 215-220) continues with eighth and sixteenth notes, some with slurs and accents. Dynamic markings include *p*, *mp*, and *mf*.

221 X

f *ff*

This musical staff (measures 221-225) continues with eighth and sixteenth notes, some with slurs and accents. Dynamic markings include *f* and *ff*.

226

fff *f*

This musical staff (measures 226-230) continues with eighth and sixteenth notes, some with slurs and accents. Dynamic markings include *fff* and *f*.

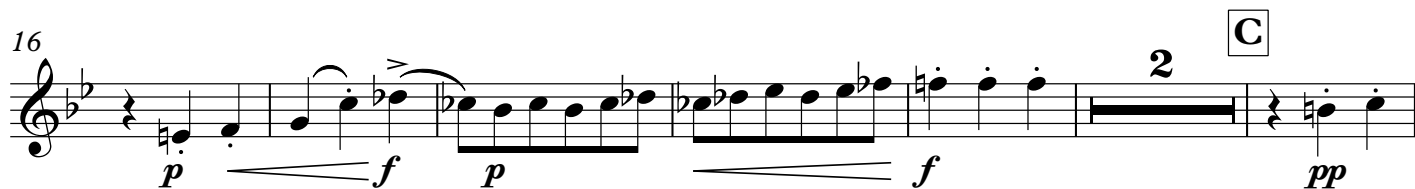
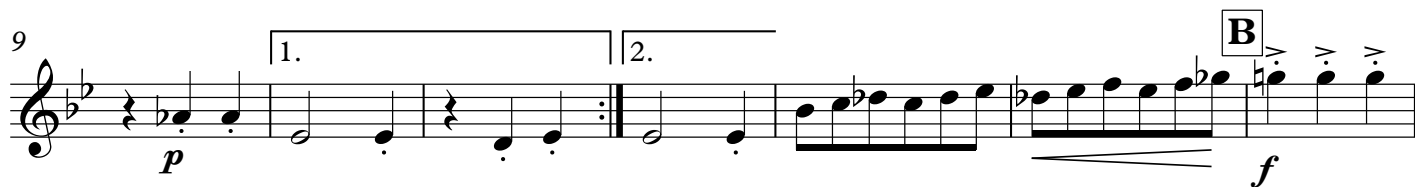
231 Y

mp *pp*

This musical staff (measures 231-236) continues with eighth and sixteenth notes, some with slurs and accents. Dynamic markings include *mp* and *pp*.

237

This musical staff (measures 237-241) continues with eighth and sixteenth notes, some with slurs and accents. It ends with a double bar line.

Presto $\text{♩} = 92$ 

III.

10

Largo ♩ = 44
2 **A** **2** **B**

mp

7

C

p *mp* *pp*

11

D **E**

pp *mp* *pp*

16

F **G**

pp

20

pp

23

H **I**

pp

28

J **K**

p *pp*

33

cresc. poco a poco

36 **L**

f

39 **M** **N**

pp *p*

43 **O** **P**

pp *mf* *f* *ff*

47 **Q**

f

50 **R**

fff *pp*

53 **S**

ppp

IV.

Vivace $\text{♩} = 84$

A

B

C

D

12 *ff* 6 *p*

11 *mp* 3 *p*

18

22 *mp* *p*

27 *f* *p*

31

35 *mf*

39 E

Staff 39-44: Treble clef, key of D major (F# C# G# D). Measure 39: D4 quarter, E4 quarter, F#4 quarter, G#4 quarter. Measure 40: A4 quarter, B4 quarter, C#5 quarter, D5 quarter. Measure 41: D5 quarter, C#5 quarter, B4 quarter, A4 quarter. Measure 42: G#4 quarter, F#4 quarter, E4 quarter, D4 quarter. Measure 43: D4 quarter, E4 quarter, F#4 quarter, G#4 quarter. Measure 44: A4 quarter, B4 quarter, C#5 quarter, D5 quarter. Dynamics: *f* (forte) starting at measure 41.

45

Staff 45-49: Treble clef, key of D major. Measure 45: D4 quarter, E4 quarter, F#4 quarter, G#4 quarter. Measure 46: A4 quarter, B4 quarter, C#5 quarter, D5 quarter. Measure 47: D5 quarter, C#5 quarter, B4 quarter, A4 quarter. Measure 48: G#4 quarter, F#4 quarter, E4 quarter, D4 quarter. Measure 49: D4 quarter, E4 quarter, F#4 quarter, G#4 quarter. Dynamics: *mp* (mezzo-piano) starting at measure 45.

50 F

Staff 50-54: Treble clef, key of D major. Measure 50: D4 quarter, E4 quarter, F#4 quarter, G#4 quarter. Measure 51: A4 quarter, B4 quarter, C#5 quarter, D5 quarter. Measure 52: D5 quarter, C#5 quarter, B4 quarter, A4 quarter. Measure 53: G#4 quarter, F#4 quarter, E4 quarter, D4 quarter. Measure 54: D4 quarter, E4 quarter, F#4 quarter, G#4 quarter. Dynamics: *mp* (mezzo-piano) starting at measure 50, *f* (forte) starting at measure 53.

55

Staff 55-59: Treble clef, key of D major. Measure 55: D4 quarter, E4 quarter, F#4 quarter, G#4 quarter. Measure 56: A4 quarter, B4 quarter, C#5 quarter, D5 quarter. Measure 57: D5 quarter, C#5 quarter, B4 quarter, A4 quarter. Measure 58: G#4 quarter, F#4 quarter, E4 quarter, D4 quarter. Measure 59: D4 quarter, E4 quarter, F#4 quarter, G#4 quarter. Dynamics: *p* (piano) starting at measure 55.

60 G

Staff 60-65: Treble clef, key of D major. Measure 60: D4 quarter, E4 quarter, F#4 quarter, G#4 quarter. Measure 61: A4 quarter, B4 quarter, C#5 quarter, D5 quarter. Measure 62: D5 quarter, C#5 quarter, B4 quarter, A4 quarter. Measure 63: G#4 quarter, F#4 quarter, E4 quarter, D4 quarter. Measure 64: D4 quarter, E4 quarter, F#4 quarter, G#4 quarter. Measure 65: A4 quarter, B4 quarter, C#5 quarter, D5 quarter. Dynamics: *f* (forte) starting at measure 63.

66 H

Staff 66-70: Treble clef, key of D major. Measure 66: D4 quarter, E4 quarter, F#4 quarter, G#4 quarter. Measure 67: A4 quarter, B4 quarter, C#5 quarter, D5 quarter. Measure 68: D5 quarter, C#5 quarter, B4 quarter, A4 quarter. Measure 69: G#4 quarter, F#4 quarter, E4 quarter, D4 quarter. Measure 70: D4 quarter, E4 quarter, F#4 quarter, G#4 quarter. Dynamics: *p* (piano) starting at measure 66, *ff* (fortissimo) starting at measure 68.

71 I

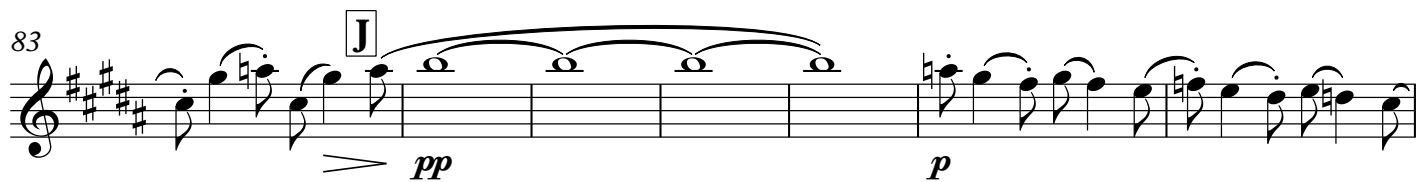
Staff 71-75: Treble clef, key of D major. Measure 71: D4 quarter, E4 quarter, F#4 quarter, G#4 quarter. Measure 72: A4 quarter, B4 quarter, C#5 quarter, D5 quarter. Measure 73: D5 quarter, C#5 quarter, B4 quarter, A4 quarter. Measure 74: G#4 quarter, F#4 quarter, E4 quarter, D4 quarter. Measure 75: D4 quarter, E4 quarter, F#4 quarter, G#4 quarter. Dynamics: *f* (forte) starting at measure 71.

14

77



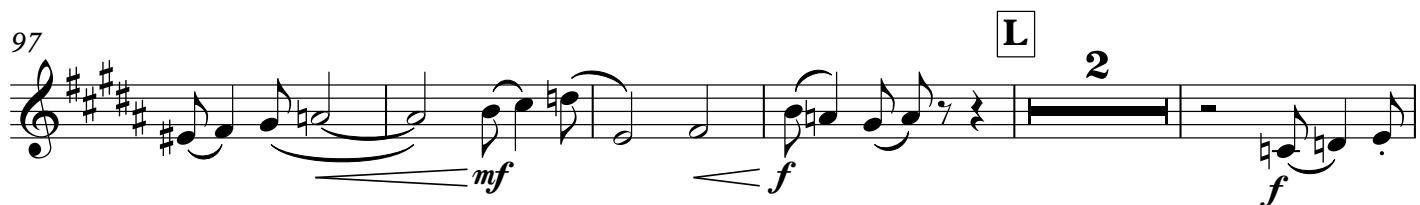
83



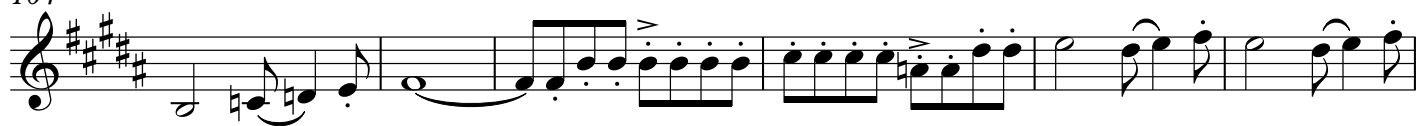
90



97



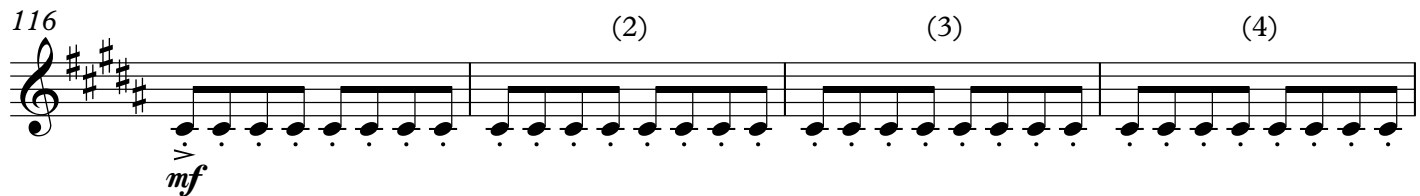
104



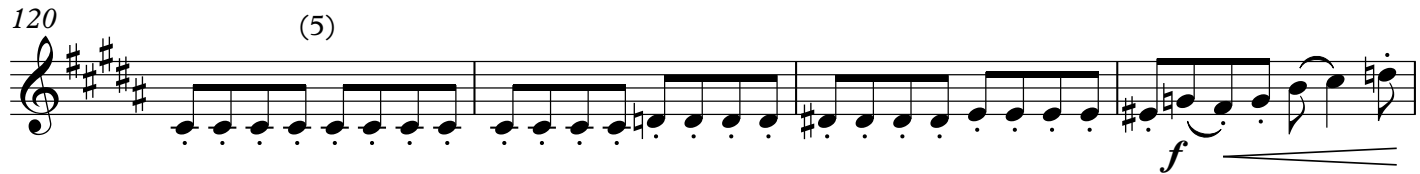
110



116



120



124

