

Violin II
Violin II
Violin II

Concerto

for Violin, Viola, and Orchestra

Frank Wilhoit, Op. 41

Molto moderato, uno battuto

Violin II score, measures 1-63. The piece is in 3/4 time, marked *Molto moderato, uno battuto*. The score includes dynamic markings (*p*, *mp*, *f*, *mf*, *pp*) and articulation (accents, slurs). Rehearsal marks A, B, C, and D are indicated. Measure 1 has a first ending bracket labeled '2'. Measure 63 has a second ending bracket labeled '9' followed by a bracket labeled '8'.

11 *mp* *p* A

20 *mf*

28 *f*

36 B *p* *p*

44

52 C *pp* 0

63 D 9 8

87

mp *mf*

95

rit. *a tempo*

f *ff*

E

f *ff*

102

9

ff

ff

115

F

mp

7

mp

128

poco rit. *a tempo*

pizz.

pp *pp* *mp*

G

poco rit. *a tempo*

pizz.

pp *pp* *mp*

136

8

arco

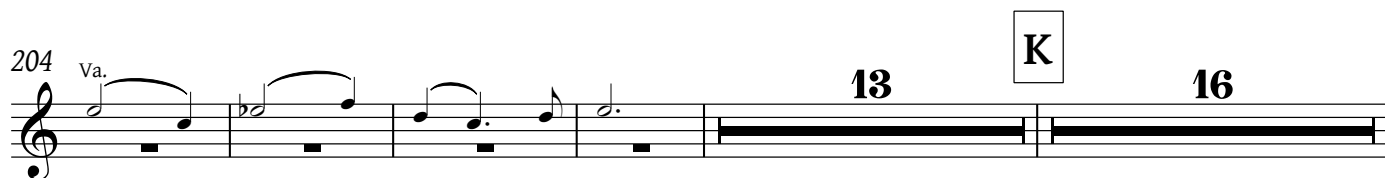
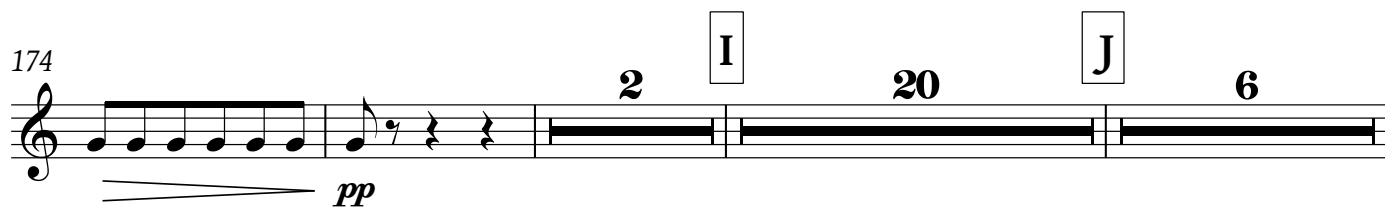
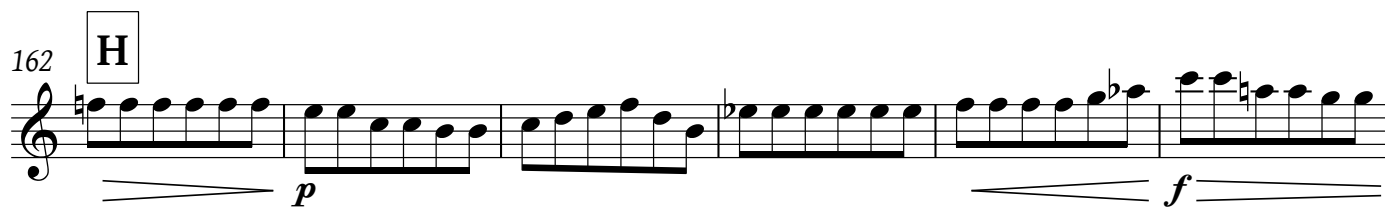
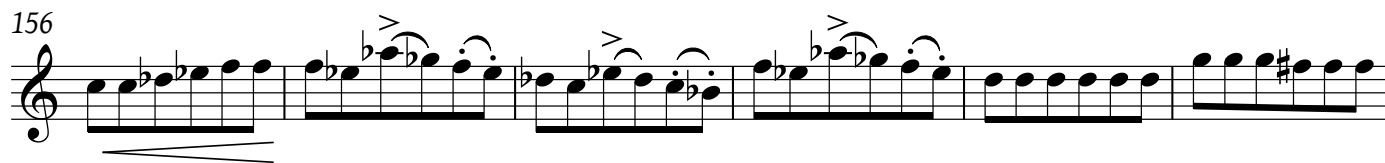
pp *p*

pp *p*

150

mf *p*

mf *p*



280 **N** *a tempo*

286

292

298

304 **O** *ppp* **14** **P** Va.

323 **20** **Q** **17** Solo Va.

364 **R** *mf*

371 **17** **S** **23** **T** **3** **2** *rall.* *ff*

418 *Largamente assai* **4** *ff* **4** *ff* **8** *animando*

U

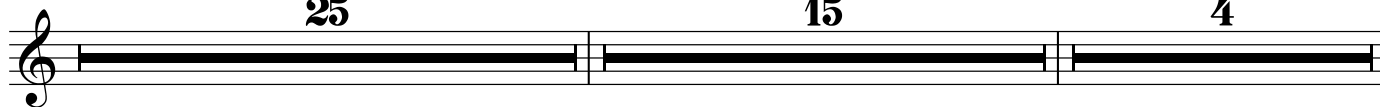
V

436 *Tempo, un poco sostenuto**rit.*

25

15

4



W

Molto tranquillo

X

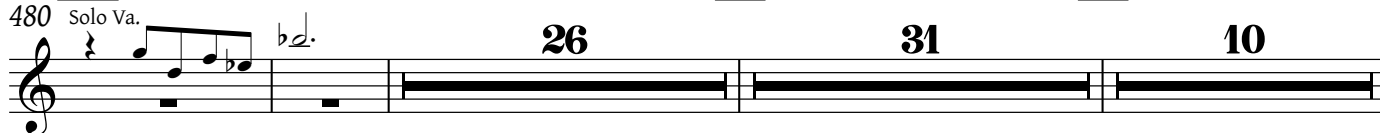
Y

480 Solo Va.

26

31

10



549

(2)

(3)

(4)

(5)

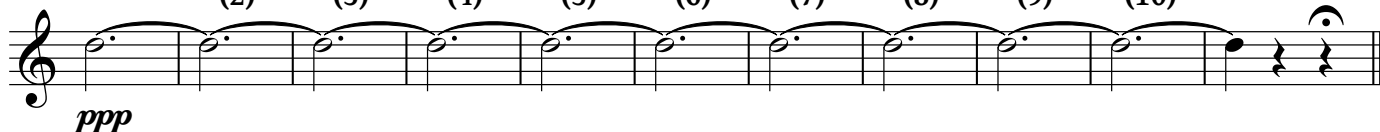
(6)

(7)

(8)

(9)

(10)

*ppp*

II.

Allegro con brio

A

13



17

*mp*

22



26

*p*

30

B

11



44 **C**

f *p*

49 **D**

mp *p* *p*

56

60

pp

64 **E** **F** **G**

11 **14** **17** **9**

115 **H**

mf *fp*

126

mf *p*

134 **I** **J**

13 **23**

173 **K**

Solo

mf *p*

180 **L** **M**

15

mp

200 **Tutti**

f

3

207

mp *f*

212 **N**

217

3

p

224

poco rit.

8

pp

237 **O**
pp

242

247 **P** *poco a poco animando*
mp *p*

253 *mp*

258 **Q**
p *f*

273

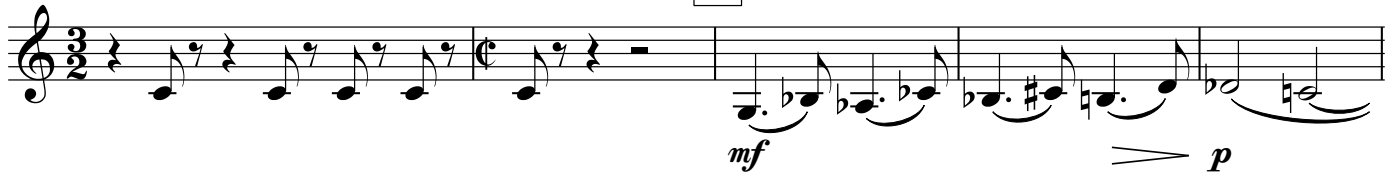
278 **R** [*Tempo I*]

283 **S**
p *mp* *f*

298



303



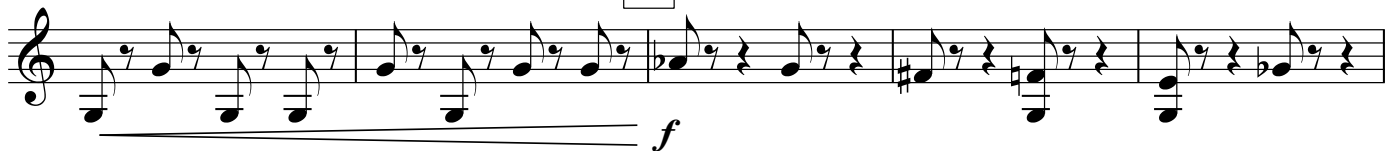
308



313



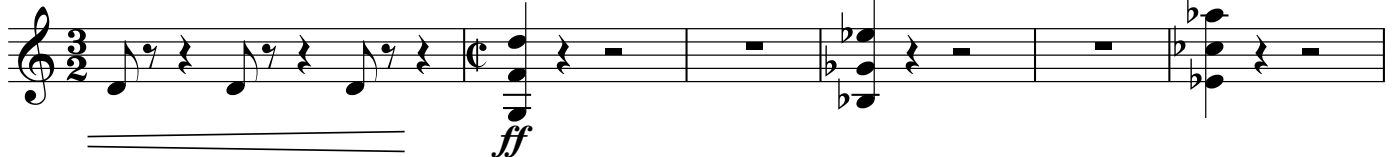
322



327



332



338



382

mp

387

mf

Y

391

f *ff*

396

fff *f* *p*

402

f *p*

410

Z

pp *p* *rit.* *pizz.*